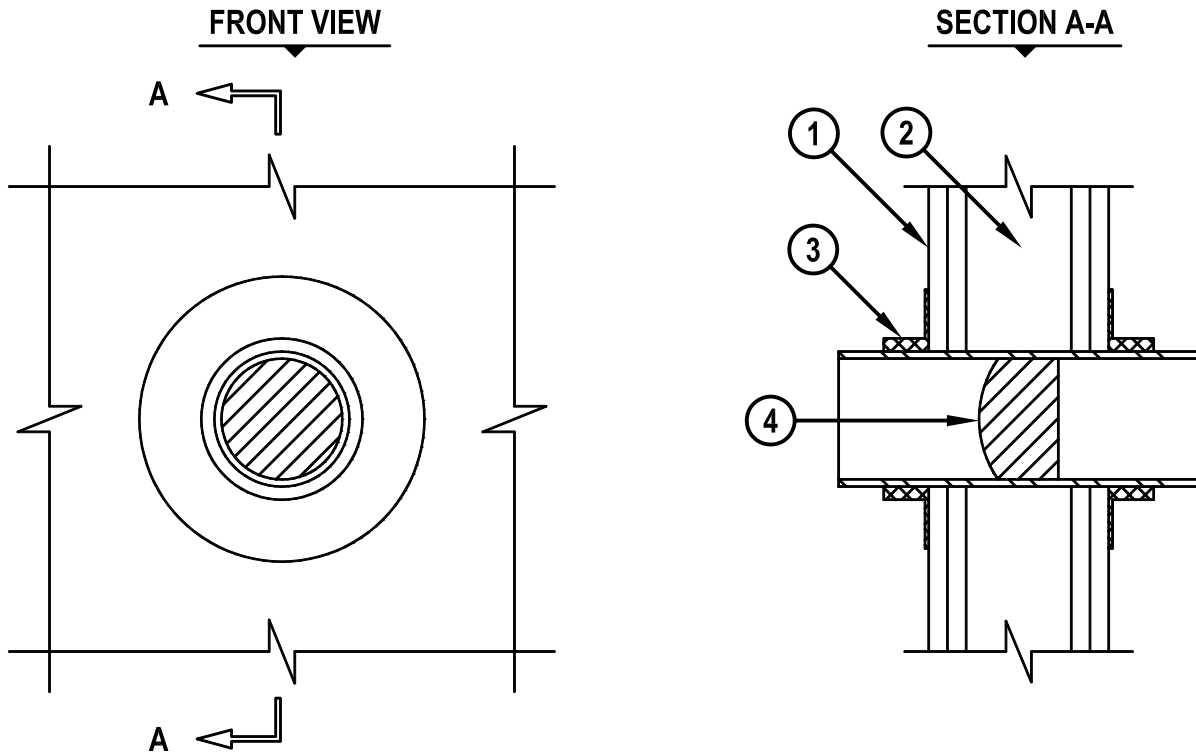


**BLANK OPENING THROUGH "UNIQUE FIRESTOP SLEEVE" IN 1-HR. OR 2-HR.  
GYPSUM WALL ASSEMBLY**

F-RATING = 1-HR. OR 2-HR.

T-RATING = 0-HR.

WL0023a.041905



1. GYPSUM WALL ASSEMBLY (UL/cUL CLASSIFIED U300, U400 OR V400 SERIES) (1-HR. OR 2-HR. FIRE-RATING),
2. [NOT SHOWN] WOOD STUDS TO CONSIST OF NOMINAL 2" x 4" LUMBER. STEEL STUDS TO BE MINIMUM 3-1/2" WIDE.
3. UNIQUE FIRESTOP PRODUCTS, DIVISION OF "IT'S UNIQUE" INC. SMOOTH SLEEVE, THREADED SLEEVE, OR SPLIT SLEEVE (2" AND 4" SIZES).
4. ONE HILTI CP 658T FIRESTOP PLUG INSTALLED TIGHTLY WITHIN SLEEVE AND CENTERED WITHIN WALL. WHEN SPLIT SLEEVE IS USED, INSTALL TWO HILTI CP 658T FIRESTOP PLUGS, FLUSH WITH BOTH ENDS OF SLEEVE.

**NOTE : MAXIMUM DIAMETER OF OPENING IN WALL FOR 2-7/16" AND 4-1/2" SIZES ARE 2-1/4", AND 4-1/2", RESPECTIVELY.**



HILTI, Inc.  
Tulsa, Oklahoma USA (918) 252-6000

Sheet	1 of 1
Scale	5/32" = 1"
Date	APR. 19, 2005

Drawing No.

**WL  
0023a**